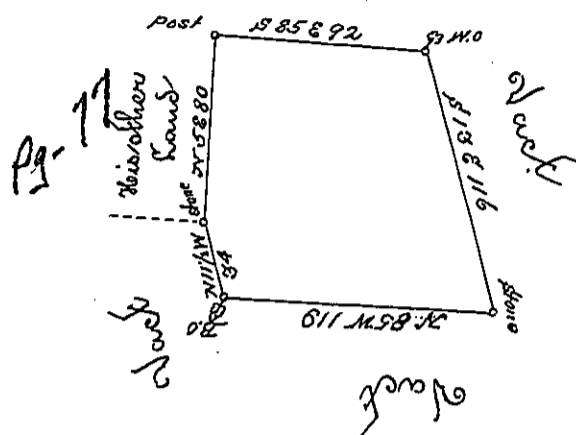


Edw<sup>d</sup> Farmer



By Virtue of a Warrant dated the \_\_\_\_\_ day of \_\_\_\_\_ Surveyed the 18th day of July 1752, unto Conrad Bittenbender the above described Tract of Land situate over the Blue Mountains in the County of Bucks containing seven by acres & 109 <sup>70</sup>/<sub>100</sub> & allowance of 6 <sup>2</sup>/<sub>100</sub> ct

Edw<sup>d</sup> Scull

IN TESTIMONY that the above is a copy of the original remaining on file in the Department of Internal Affairs of Pennsylvania, made conformably to an Act of Assembly approved the 16th day of February, 1833. I have hereunto set my Hand and caused the Seal of said Department to be affixed at Harrisburg, this fourth \_\_\_\_\_ day of February 1896.

*James W. Patton*  
Secretary of Internal Affairs.